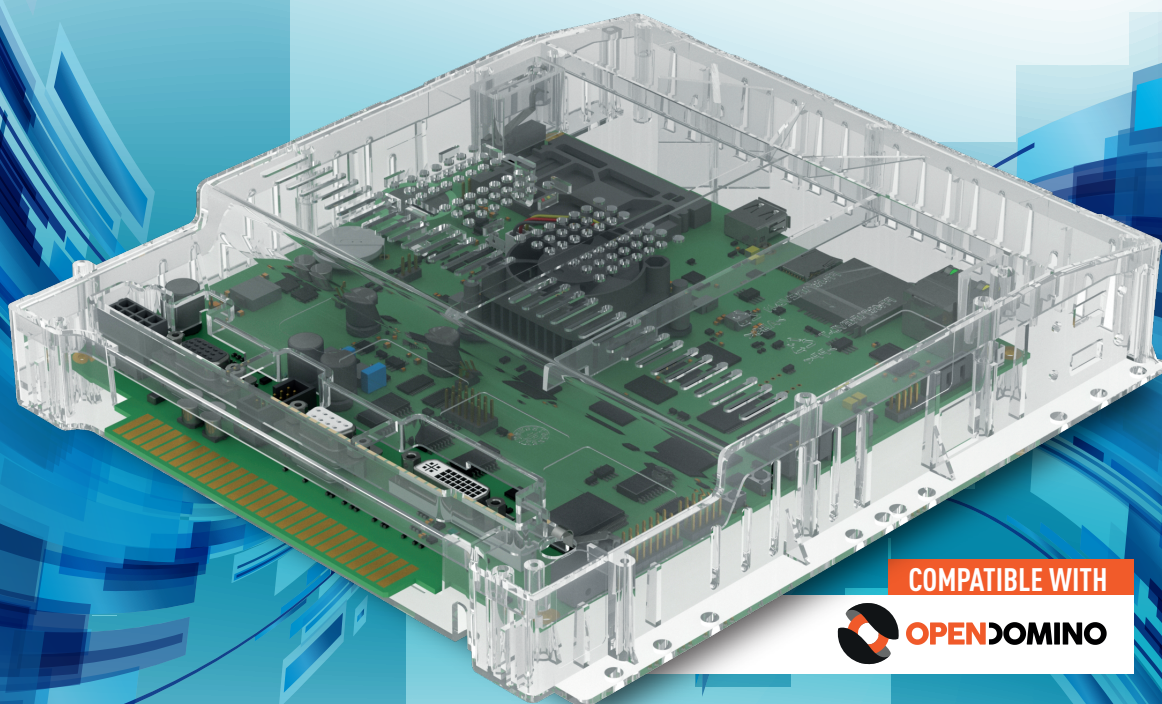


G640S

DEVELOPED FOR REMOTE CONTROL



COMPATIBLE WITH



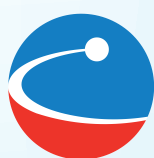
OPENDOMINO

**GAMING PLATFORM FOR
THE ITALIAN AWP MARKET**

BASED ON THE INTEL® BAY TRAIL PLATFORM

HIGH COMPUTING AND GRAPHICS PERFORMANCE

LOW POWER CONSUMPTION



PSM
TECH

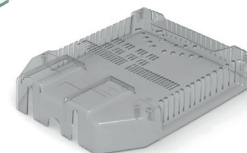
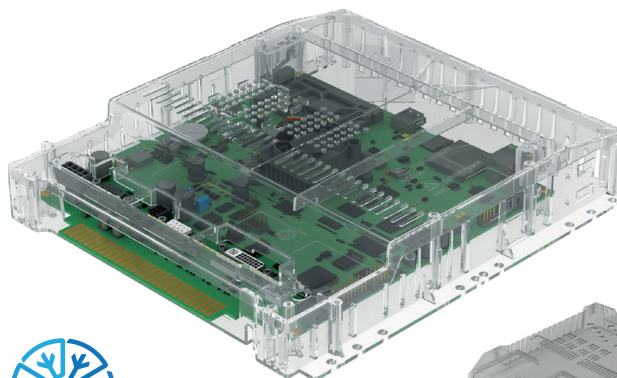
www.psm-tech.com

G640S

COMPATIBLE WITH



OPENDOMINO



EXTERNAL COVER
AVAILABLE



CPU

Dual-core Intel® Bay Trail



Memory

2GB DDR3L 1333MHz soldered onboard



Graphics

Intel® HD Graphics 4000 Series



ULTRACOOOL

4.3W TDP SYSTEM-ON-CHIP



ADM



FEATURES

CPU	Intel® Bay Trail with 22nm technology CPU Dual-core
Graphics	HD Graphics 4000 Dual High Resolution independent Displays HW Support of DirectX 11, OpenGL 4.0 OpenCL 1.2, H.264, MPEG2, MVC, VC-1, VP8, MJPEG
Video Outputs	VGA up to 2560x1600@60Hz DVI-D up to 1920x1080@60Hz (optional)
System Memory	2GB DDR3L 1333MHz soldered onboard
Mass Storage	eMMC 8GB
Custom Memory	SRAM 2MB with battery backup FRAM 8kB non-volatile
Jamma	Italian Comma6A version 28+28 pin (de-facto standard) Amplified Audio Output 2x20W Dual RS-232 auxiliary (card reader support RS-232) 2 Aux Tamper Monitor inputs 3-state Output for electromechanical locks
External Ports	CCTalk for Hopper and Coin Acceptor (de-facto standard) RS-232 port on DB9 female connector for AAMS
Internal Ports	Ethernet (optional) 2x USB 2.0 on IDC connector SATA3 port with power connector (optional) Smart Card Reader 2x RS-232 auxiliary (optional)
Removable Mass Storage	µSD reader USB 2.0 Type A Socket EEPROM (optional) TPM 1.2 (optional)
Security	Board opening detection with timestamp (battery backup) Additional cover opening detection with timestamp (battery backup) Unique Serial Number Hardware Protection with cypher key Software check for Voltage and Temperatures



**PSM
TECH**

Ph. +39 0575 1824517 - sales@psm-tech.com
www.psm-tech.com